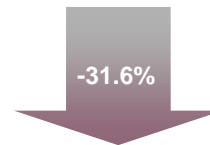


# BNY Mellon Pension Asset / Liability Summary December 2008

## Asset and Liability Returns

## Funded Status Tracker

	Dec-08	Year to Date
<b>Assets (Moderate Risk)*</b>	<b>+3.1%</b>	<b>-23.0%</b>
<b>Liabilities (Typical Plan)*</b>	<b>+20.3%</b>	<b>+12.6%</b>



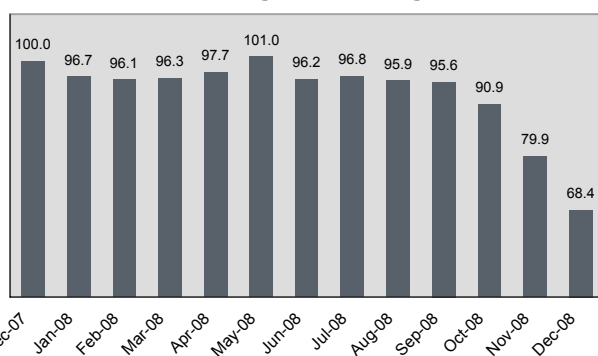
Funded Status is the ratio of asset values to liabilities. Through 12-31-2008, Moderate Risk assets have declined -31.6% relative to Typical liabilities.\*

## Market Summary

- US stocks year-end rally brought slightly positive December returns, capping one of the worst years in history
- Long US Treasury bond yields dropped 70 bp, falling below 3%
- Long high grade corporate yields were 125 bp lower, as spreads narrowed more than 50 bp vs. Treasuries
- International stock markets were much better than US due to a 6% decline in the dollar
- Asset returns of Moderate Risk pension portfolios were up +3.1%, but Typical pension liability values were +20.3% higher
- Funding ratios for typical pension plans declined more than 11 percentage points in December; more than 30% for all 2008

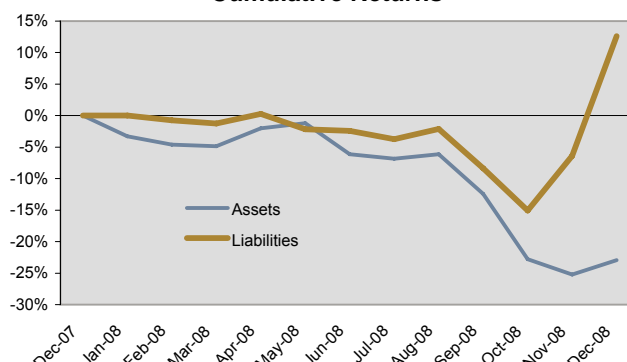
## Funded Status Changes (Year to Date)

**Plan Funding Ratio Changes**



Source: BNY Mellon Asset Management

**Cumulative Returns**



Source: BNY Mellon Asset Management, Russell, MSCI, Barclays Capital

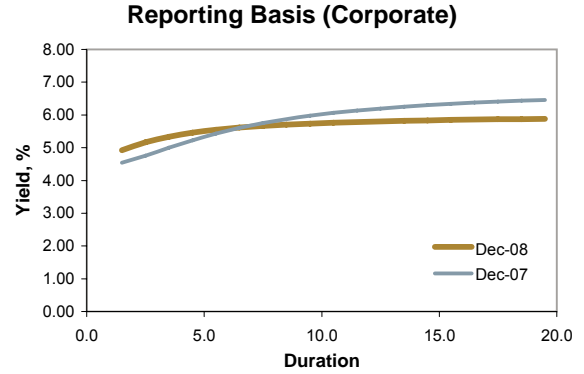
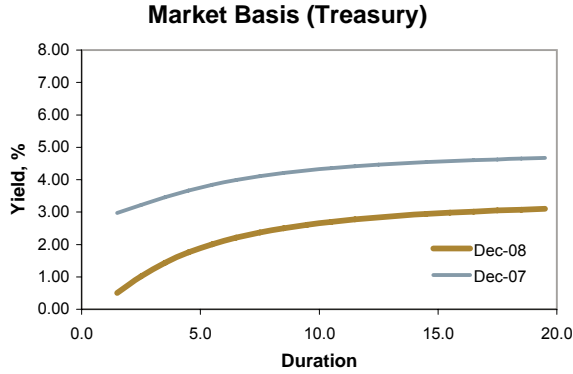
\* The asset and liability returns are for a hypothetical Moderate Risk portfolio (see Notes below) compared to the return of BNY Mellon's "Typical" Pension Liability Index, using Reported Value discounting. The Funding Ratio is the ratio of market value of assets to reported value of liabilities, and is assumed to begin the year at 100% funded.

## Notes

- (1) Reported Value of Liabilities : projected benefit payments discounted at Aa Corporate term structure
  - (2) Moderate Risk Portfolio: 50% Russell 3000, 10% MSCI EAFE, 40% Barclays Capital Aggregate Bonds
- See attached disclosures

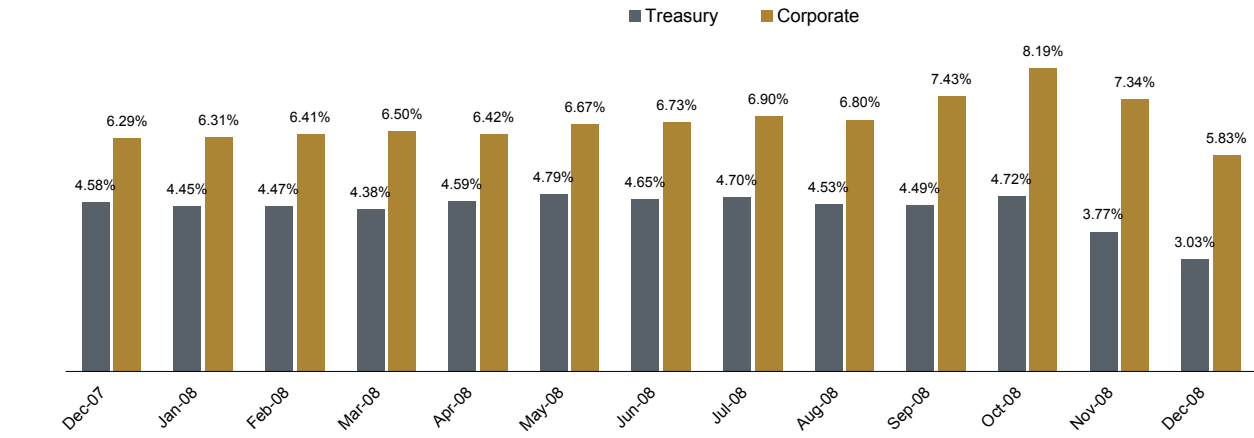
# BNY Mellon Pension Asset / Liability Summary December 2008

## Term Structures



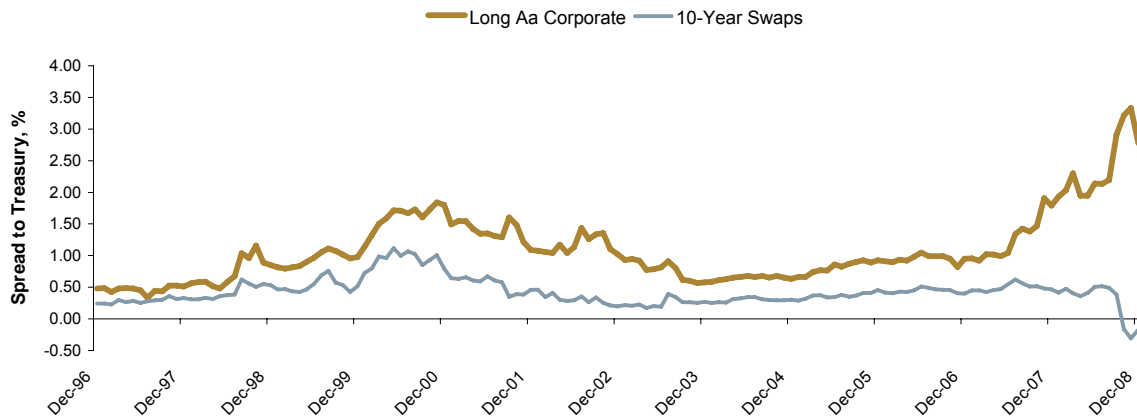
Source: BNY Mellon Asset Management, Barclays Capital

## Liability Average Discount Rates



Source: BNY Mellon Asset Management

## Historical Yield Spreads to Treasury



Source: Barclays Capital

## BNY Mellon Pension Asset / Liability Detail December 2008

	This Month	Three Months	Year To Date	One Year	annualized		
					Three Years	Five Years	Ten Years
<b>BNY Mellon Pension Liability Index Returns (%)</b>							
<b>Reporting Basis (1)</b>							
Retired Plan	+11.0	+13.9	+8.1	+8.1	+5.3	+4.8	+5.9
Mature Plan	+14.1	+16.9	+9.7	+9.7	+5.4	+5.2	+6.1
Typical Plan	+20.3	+22.9	+12.6	+12.6	+5.6	+6.1	+6.6
Young Plan	+27.7	+29.7	+16.0	+16.0	+5.8	+7.0	+7.1
<b>Market Value Basis (2)</b>							
Retired Plan	+6.3	+13.9	+18.8	+18.8	+9.9	+7.7	+6.7
Mature Plan	+8.5	+18.0	+23.0	+23.0	+11.1	+9.0	+7.4
Typical Plan	+12.4	+25.3	+30.7	+30.7	+13.1	+11.3	+8.5
Young Plan	+16.4	+33.1	+38.7	+38.7	+15.0	+13.8	+9.6

### Asset Returns (%)

Russell 3000	+1.9	-22.8	-37.3	-37.3	-8.6	-1.9	-0.8
MSCI-EAFE®	+6.0	-20.0	-43.4	-43.4	-7.4	+1.7	+0.8
Barclays Aggregate	+3.7	+4.6	+5.2	+5.2	+5.5	+4.7	+5.6
Barclays Long Credit Aa	+12.0	+15.3	+8.2	+8.2	+4.6	+5.6	+6.7
Barclays Long Treasury	+9.2	+18.7	+24.0	+24.0	+11.5	+9.7	+8.1

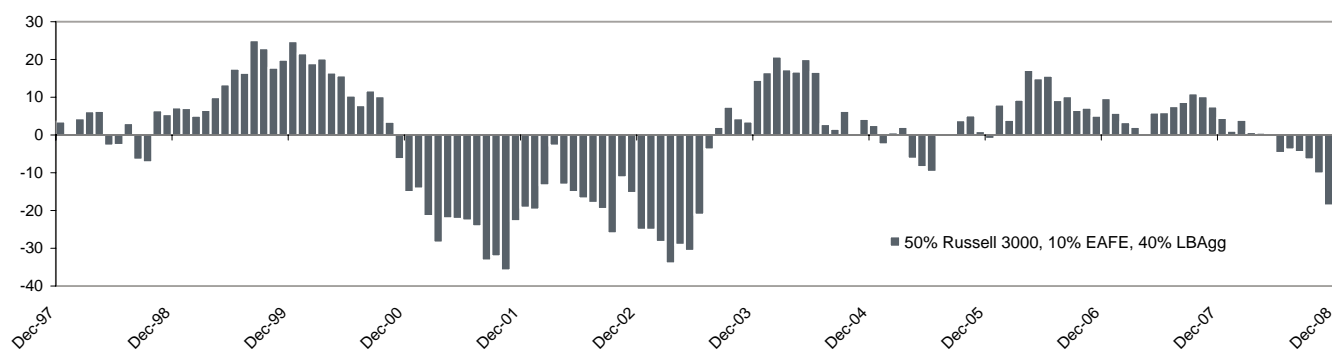
### Benchmark Portfolios (%)

Low Risk (3)	+9.0	+2.8	-7.4	-7.4	+0.8	+3.6	+4.8
Moderate Risk (4)	+3.1	-12.0	-23.0	-23.0	-2.7	+1.3	+2.2
Aggressive (5)	+2.9	-17.2	-31.1	-31.1	-5.5	+0.1	+1.0
Long Duration Bonds (6)	+12.0	+15.3	+8.2	+8.2	+4.6	+5.6	+6.7

### Benchmark Excess Return vs. Liabilities (BNY Mellon "Typical" Pension Liability Index)

Low Risk	-11.3	-20.1	-20.0	-20.0	-4.8	-2.5	-1.9
Moderate Risk	-17.2	-34.9	-35.5	-35.5	-8.3	-4.8	-4.4
Aggressive	-17.4	-40.1	-43.6	-43.6	-11.1	-6.0	-5.7
Long Duration Bonds	-8.3	-7.6	-4.4	-4.4	-1.0	-0.4	+0.1

### Asset vs. Liability Returns



Source: BNY Mellon Asset Management

### Notes

- (1) *Reported Value of Liabilities* : projected payments discounted at Aa Corporate term structure
- (2) *Market Value of Liabilities* : projected payments discounted at US Treasury term structure
- (3) *Low Risk Portfolio* : 30% Russell 3000, 70% LB Long Credit Aa Bonds
- (4) *Moderate Risk Portfolio* : 50% Russell 3000, 10% MSCI EAFE, 40% Lehman Aggregate Bonds
- (5) *Aggressive Portfolio* : 65% Russell 3000, 15% MSCI EAFE, 20% LB Aggregate Bonds
- (6) *Long Duration Bonds* : 100% LB Long Credit Aa Bonds

## **Disclosures**

This does not constitute investment advice. You should keep in mind that no allocation plan can always ensure a profit or protect against a loss.

### **Liability Index Disclosure:**

The BNY Mellon Pension Liability Indexes are calculated using the present values of hypothetical *Retired*, *Mature*, *Typical*, and *Young* benefit liability cash flow schedules, as calculated by BNY Mellon research. These cash flows are discounted according to a proprietary term structure model applied to every forward payment date. Pricing for the term structure model is developed from BNY Mellon internal research. Returns for each of the BNY Mellon Pension Liability Indexes are calculated from monthly changes in the present values of each index.

Index valuations and return calculations are performed using two sets of data. The *Reporting Basis* discounting uses high-grade corporate bond yields to fit a proprietary BNY Mellon term structure model. This method is intended to provide a reasonable approximation of the methodologies generally used for accounting and funding purposes. The *Market Value Basis* discounting uses US Treasury bond yields to fit a proprietary BNY Mellon term structure model. This method is intended to provide a reasonable approximation of the cost to purchase annuities for the liabilities.

### **Asset Returns Disclosure:**

Returns for each of the hypothetical portfolios described in the text are calculated as the unmanaged weighted average of the applicable indexes, with monthly reset to the target asset mix.

### **Index Disclosure:**

The Russell 3000 Index is an unmanaged capitalization-weighted index that is broadly representative of U.S. equity markets.

The MSCI Europe, Australasia, Far East (EAFE) Index is an unmanaged market-value-weighted index of more than 1,000 securities issued by foreign companies.

The Barclays Capital U.S. Aggregate Index is an unmanaged index broadly representative of the taxable U.S. bond market.

The Barclays Capital U.S. Long Credit Aa Index is an unmanaged index representing public obligations of U.S. corporate and specified foreign debentures and secured notes with a remaining maturity of 10 years or more.

The Barclays Capital U.S. Treasury Long Index is an unmanaged index representing public obligations of the U.S. Treasury with a remaining maturity of one year or more.

The Barclays Capital U.S. Bellwether Swap 10 Year Index is an unmanaged index representing 10-year par swaps.